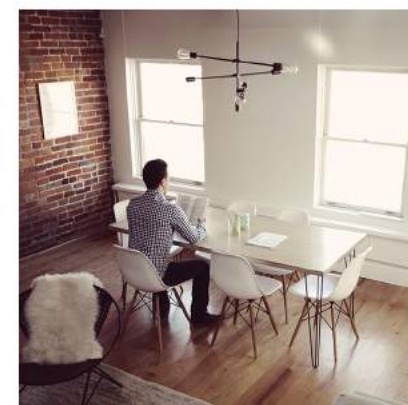


VISION



By 2033 Hailsham will be recognised as a destination for leisure, shopping & culture. It will have embraced and harnessed its growth potential and benefitted from the necessary infrastructure to support and retain its strong sense of community, civic pride and social wellbeing. Hailsham will be established as a balanced, well-proportioned and prosperous town offering its residents a high quality of life.

The town centre will be an appealing and pleasant retail and leisure destination which attracts visitors from far and wide (many via public transport from rail services at Polegate) into the unique historic market town served by modern and desirable facilities and amenities. Growth will deliver excellent schooling choices and new further education opportunities, good medical provision and care services.

An improved core retail area will support a diverse mix of independent and national shops and businesses bringing with it strong employment prospects for the town. A network of enhanced and connected green spaces, centred around the cuckoo trail will support an active and healthy community. The wetlands remain an asset of recreation and well-being for the community of Hailsham. Together with improvements to pedestrian and cycling links across the town, Hailsham residents will benefit from a safe and healthier alternative to car based travel.

FEATURES:



attractive destination
for leisure,
shopping & culture



connected and
expanded
mixed retail area



improved
non-motorised
transportation

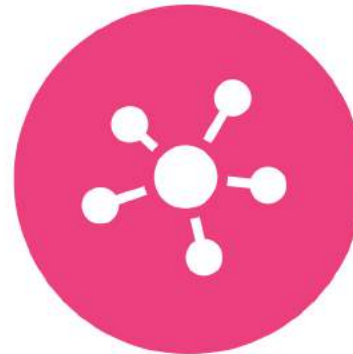


connected
green spaces for a
healthy community

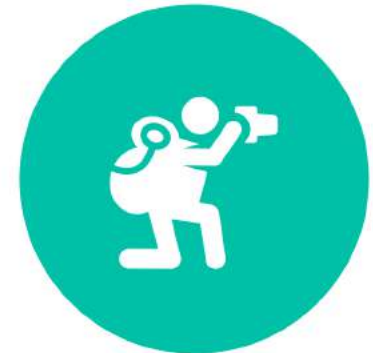
9. attractive
diverse retail and
leisure offers



1. delivery of
accessible facilities
and infrastructure



2. attracting travel and
recreation on pedestrian
and cycling routes



8. supporting new and
existing small
businesses and retailers



OBJECTIVES FOR HAILSHAM



7. re-development for
housing and regeneration
of town centre



3. reduced car
based travel



6. local renewable
energy for
cleaner air



4. protected and
enhanced habitats and
green infrastructure



5. protected local
character by fostering
innovative and high
quality design



1. Development delivers the necessary facilities and infrastructure in accessible locations for existing and new communities alike.



2. Existing pedestrian and cycling routes are preserved and enhanced. The Cuckoo Trail will be improved as a multi-functional route for tourism, travel and recreation, further linking Hailsham to its surrounding communities.



3. New developments will create well connected, attractive cycling and pedestrian routes, providing seamless integration with the existing urban areas and public green spaces to encourage a reduction in car based travel.



4. Existing habitats and green infrastructure networks are protected and enhanced through sensitive development to encourage local habitat improvement and creation.



5. The character and setting of Hailsham's conservation area, statutory listed buildings and locally listed buildings are protected by fostering a high quality design approach which promotes design innovation and reinforces the distinct local character areas of Hailsham.



6. Improve local air quality and provide reductions in carbon emissions by supporting local renewable energy generation.



7. Encourage the appropriate re-development of previously developed land to help meet housing need and encourage the regeneration of Hailsham Town Centre.



8. Protect and encourage the development of retail and commercial spaces which meet identified local need, to support new and existing small businesses and local retailers whilst also attracting inward investment into Hailsham.



9. Support existing retailers in Hailsham and encourage a diversification of the retail and leisure offers in the town to attract new shoppers and visitors.

KEY ISSUES



Lack of leisure and recreational facilities which are well connected or responsive to local need/demand.



Underinvestment in key services and infrastructure.



Higher than average long term health conditions and areas of social deprivation within Hailsham.



Meeting the needs of an ageing population.



Historically poor quality large scale developments which have failed to create locally distinctive places or enrich the existing built heritage of the town.



Lack of comprehensive cycling and pedestrian infrastructure, with high dependence on private car journeys.



No train station and poor access via public transport to national train services at Polegate across the town, acting as a barrier to residents to accessing employment, education, services and facilities.



A deficit of high quality, attractive public green space provision in some urban areas of Hailsham.



Under provision of retail and commercial space to meet the needs of local businesses, or attract sustained inward investment from national high-street retailers.